

Empowering your data control & custom solutions:

Discover SpatialChat On-premise Suite



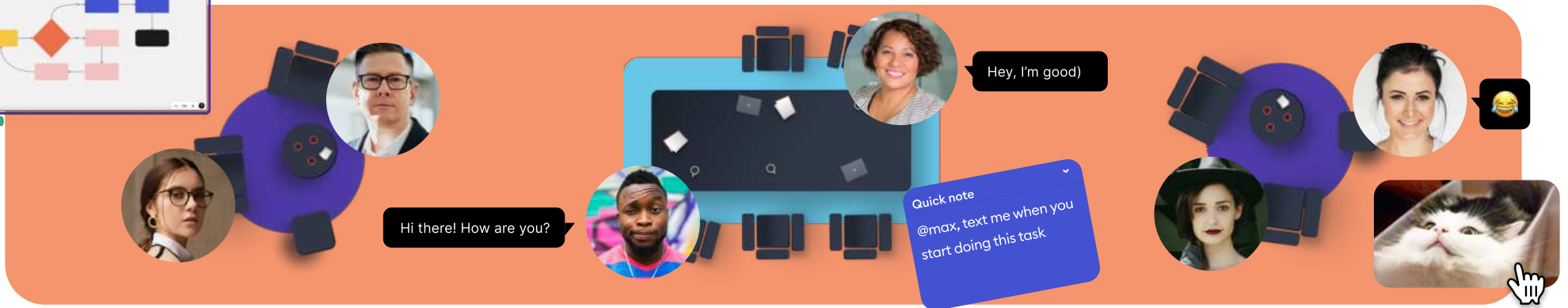
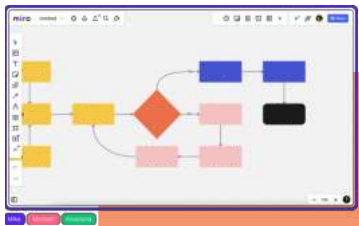
Hi! I'm Almas, CEO of SpatialChat 

Together, let's set new standards for secure and customized communication 🙌



We at SpatialChat have always strived to create a safe and private space with everything to make communication lively and truly engaging.

Our mission is to transform how teams interact, ensuring every conversation is both secure and immersive ✨



Loved by over 100,000+ users from companies like:



We've listened to our customers' calls for custom solutions prioritizing data privacy and governance.



Inspired by your feedback, we embarked on creating the **SpatialChat On-premise Suite** – a testament to our commitment to meet your needs.

The response has been overwhelmingly positive, confirming it's not just a good idea, but a necessary step forward.

What you gain with SpatialChat On-premise Suite

The SpatialChat On-Premise suite offers a **comprehensive perpetual solution** allows you to deploy and manage the SpatialChat platform within your IT environment:

This solution is positioned as a long-term solution for businesses looking to enhance their communication infrastructure with a secure, flexible, and fully customizable platform.

Total control over deployment and maintenance

Ensuring you can tailor the setup to meet specific needs and integrate seamlessly into your IT-infrastructure and domain.

Over data management, security and compliance

This option is ideal for businesses with strict compliance and data privacy requirements, as it ensures that all data entirely under your governance policies.

Customized solutions

From integrating essential tools to designing unique user experiences, it enables the creation of distinctive environments that truly stand out with options for white-labeling and full code customization.

How is the On-Premise Suite implemented in your infrastructure?

We take care of the heavy lifting, ensuring a smooth and efficient integration of the On-Premise Suite into your infrastructure, so you can focus on what matters most.

1

Discussion of the proposal

We discuss the terms of the offer and address any questions or concerns related to your specific infrastructure needs.

2

Preparation for implementation

We assist in setting up and securing the necessary access for implementation, ensuring everything is in place quickly and efficiently.

3

Platform implementation

Depending on your security requirements, the platform code is either provided to your developers or our team manages the implementation.

This process typically takes 1 to 2 weeks.

Choose the right license

Selecting the appropriate license depends on how you plan to use SpatialChat. All our licenses are designed to be one-time purchases, granting you the **right to use the platform forever**.

Basic On-premise

Ideal for companies planning to use SpatialChat internally.

This license grants you the right to use the platform exclusively within your organization.

Price: \$12,000 + VAT

Facilitator On-premise

Perfect for facilitators and consultants who incorporate SpatialChat into their service offerings for external clients.

This license allows you to use SpatialChat as a supplementary service during events, consulting, or facilitation.

Price: Contact us 🙋

Premium On-premise

Designed for entrepreneurs aiming to directly monetize SpatialChat as a standalone product.

This license grants you the right to build and sell services based on the SpatialChat platform.

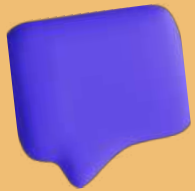
Price: Contact us 🙋



If you're interested in enhancing the security of your video calls and would like to discuss our proposal, we would be delighted to have a conversation with you.

[Click here below to schedule Demo session with us](#) 😊

Learn more



[SpatialChat Website](#)



[SpatialChat Blog](#)



[Customer Stories](#)



[Help Center](#)



[Tutorial Videos](#)



[Live References \(G2\)](#)

Social

[Facebook](#)

[Instagram](#)

[Twitter](#)

[LinkedIn](#)

[YouTube](#)